

This document contains information proprietary to Gilat Satellite Networks Ltd. and may not be reproduced in whole or in part without the express written consent of Gilat Satellite Networks Ltd. The disclosure by Gilat Satellite Networks Ltd. of information contained herein does not constitute any license or authorization to use or disclose the information, ideas or concepts presented. The contents of this document are subject to change without prior notice.



# Agenda

- System Introduction
- System Entities
- Network Topology
- Network Architecture
- System Capabilities

Confidential and proprietary information

---

---

---

---

---

---

---

---



# SkyEdge II Introduction

## System Introduction

- **SkyEdge II is a modular two-way satellite communication system**
  - **Allows connection between several remote terminals to the Internet/Extranet or to each other**
- **SE II system has three main components**
  - **The hub, satellite/transponder and remote terminals**
- **Supports two types of transmissions**
  - **Inbound are all the transmissions from the remote terminals to the hub**
  - **Outbound are all the transmissions from the hub to the remote terminals**

Confidential and proprietary information

3

Each satellite has several transponders on it. A transponder is an automatic device that receives, amplifies, and retransmits a signal on a different frequency.

---

---

---

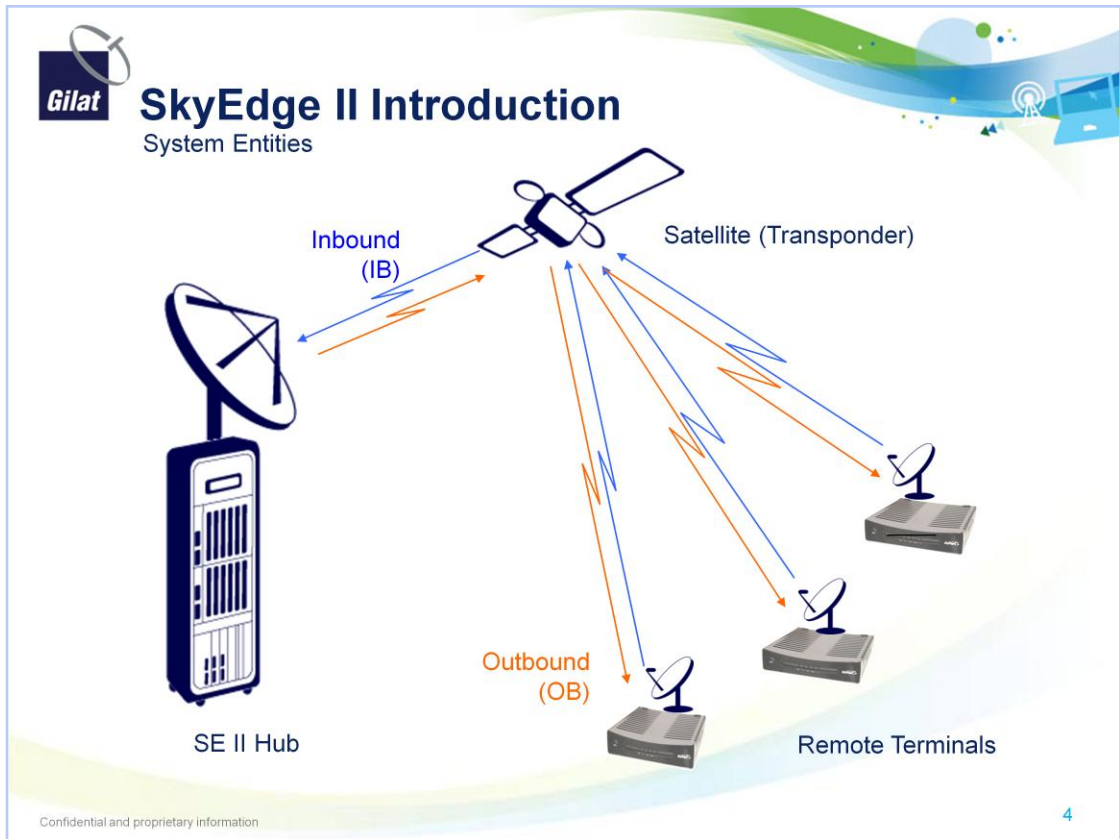
---

---

---

---

---



Every transmission from Earth to the Satellite is called Uplink.  
Every transmission from the Satellite to Earth is called Downlink.  
Every Uplink and Downlink path is called a hop.  
Therefore – OB from the hub to a VSAT would be one hop. IB from a VSAT to the hub would be one hop.

---

---

---

---

---

---

---

---



## SkyEdge II Introduction

### System Entities

- **Remote Terminal**
  - **Indoor Unit (IDU) – VSAT**
  - **Outdoor Unit (ODU) - Antenna Dish, Linear BUC and LNB**
- **Hub**
  - **Center of the SEII system**
  - **Responsible for two main functions:**
    - **Manage and control the network elements**
    - **Aggregate and distribute IB and OB IP traffic**

Confidential and proprietary information

5

VSAT (Very Small Aperture Terminal)

BUC (Block Up Converter) Tx section of the ODU

LNB (Low Noise Blocker) Rx section of the ODU

---

---

---

---

---

---

---

---



# SkyEdge II Introduction

Network Topology

- SkyEdge II hub enables system VSATs to communicate via satellite links:
  - Internet/Intranet networking (VSAT-to-Hub)
  - Each other (VSAT-to-VSAT)
- System supports three basic topologies:
  - Star
  - Mesh
  - Multi-star



Confidential and proprietary information

6

Star Topology – all user traffic is going through the Hub. VSAT to VSAT traffic is double hop.

Mesh Topology – Traffic generated by the user, can be transmitted between VSATs in one hop. Hub is needed only for session initiation, signaling and closure. User traffic is not going through the Hub. Mesh and Star topologies can be implemented on the same Hub.

Multi-Star Topology – several star topology networks implemented in one hub, each one has a different gateway. All managed by the same NMS.

---

---

---

---

---

---

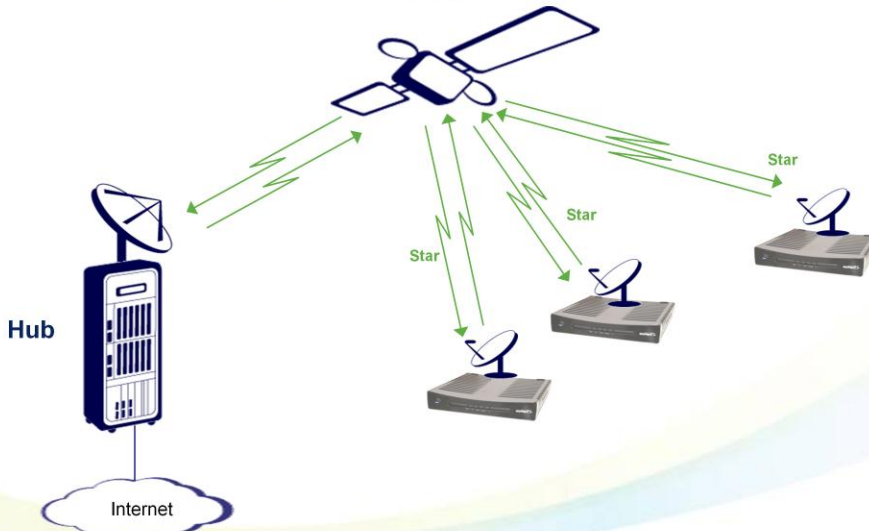
---



# Network Topology

Star Topology

- Each VSAT always communicates through the Hub to the internet/intranet or to another VSAT (double hop)



Confidential and proprietary information

7

Star VSAT to VSAT communication – 2 hops

---

---

---

---

---

---

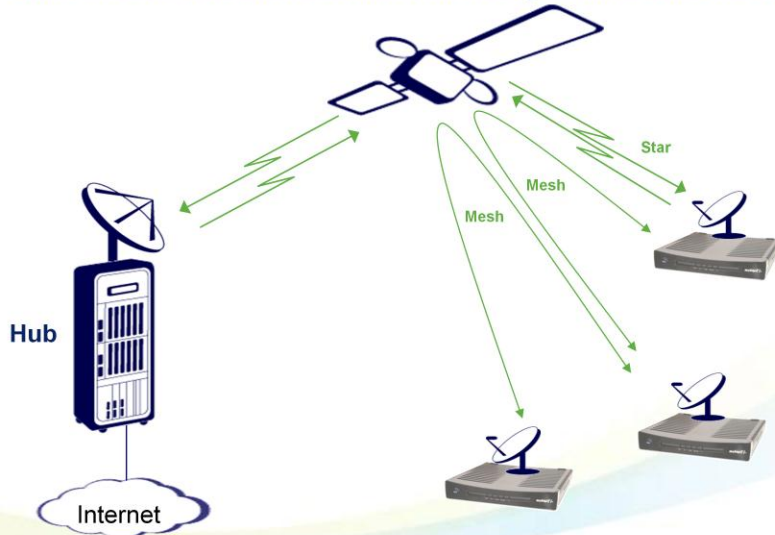
---



# Network Topology

Star and Mesh Topology

- In Mesh connectivity data can be directly transferred between VSATs, while channel allocation and network management is done via the hub.



Confidential and proprietary information

Mesh VSAT to VSAT communication – 1 hop

---

---

---

---

---

---

---

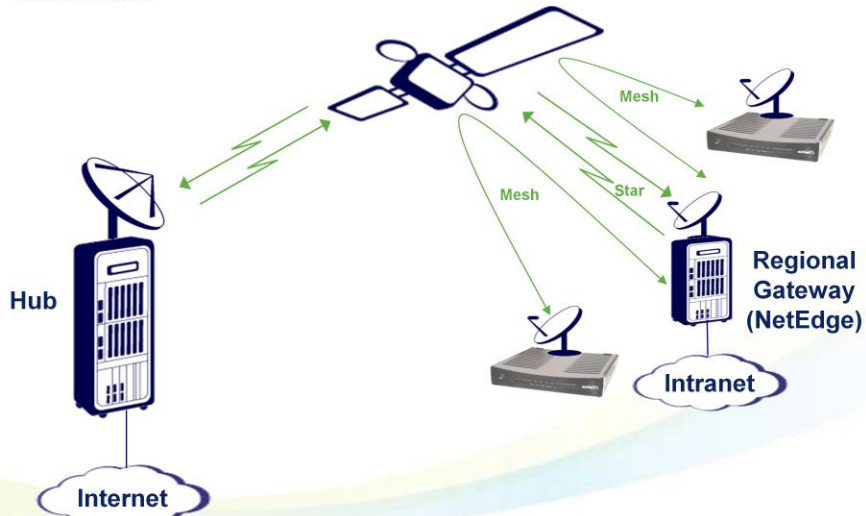
---



# Network Topology

## Multi-Star Topology

- In Multi-star connectivity data is transferred between VSATs, using a common gateway. Channel allocation and network management is done via the hub.



Confidential and proprietary information

A Multi Star hub will have one central hub, and several regional gateways.

---

---

---

---

---

---

---

---



# SkyEdge II Introduction

Network Architecture

- **The SE II hub consists of one to four Network Segments (NS)**
- **A NS is a subnetwork that manages three physical subsystems**
  - **Inbound Subsystem (IBSS)**
    - Demodulates and Decodes the traffic coming from the VSATs (Inbound)
  - **Outbound Subsystem (OBSS)**
    - Multiplexes and Modulates the traffic towards the VSATs (Outbound)
  - **Application Subsystem (AppSS)**
    - Provides means to distribute traffic to or from the Internet/Intranet and gives optional QoS services

Confidential and proprietary information



# SkyEdge II Introduction

Network Architecture (1)

- **Radio Frequency Transceiver (RFT)**
  - SE II supports C-band, Ext. C-band and Ku-band
  - SE II system uses L-band for both IB and OB
- **Hub Applications/Add-ons**
  - Shared by all the NS
  - Include:
    - Internet Page accelerator (IPA)
    - L-band to IF and IF to L-band converters
- **Network Management System (NMS)**
  - Facilitates management, control, configuration, monitoring and operation of the system

Confidential and proprietary information

11

The Internet Page Accelerator (IPA) or Server Farm is an optional feature that provides HTTP acceleration mechanisms.

The L-band up and down converters are needed if using an IF RFT.

RFT - Radio Frequency Transceiver

Why L-band and not IF?

Costs – RFT less expensive

Easy RF deployment

Wider range of frequencies (not limited to 36 MHz)

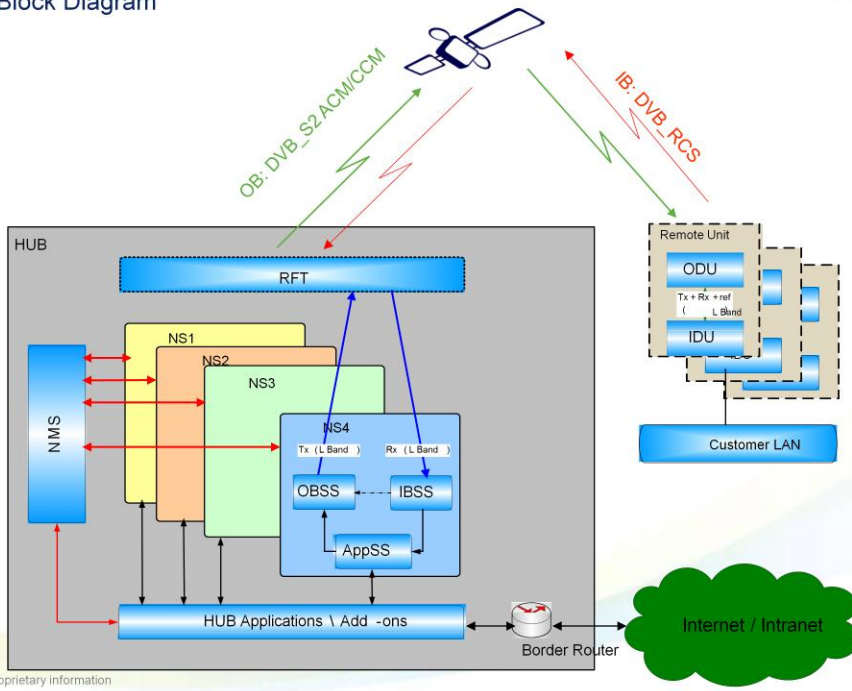
More flexible if BW is not in same transponder

If IF RFT already exists, converters can be easily added



# Network Architecture

Block Diagram



---

---

---

---

---

---

---

---



## SkyEdge II Introduction

Outbound – General Description

- **Carries Unicast and Multicast data, VoIP traffic, synchronization information for the return (Inbound) channel and network control traffic.**
- **The VSATs recognize and extract the traffic which is intended for them**
- **The SE II OB is based on DVB-S2 (EN 302 307) standard**
  - **Supports two operation modes:**
    - **Constant Coding and Modulation (CCM)**
      - FEC coding and modulation (MODCOD) is constant
    - **Adaptive Coding and Modulation (ACM)**
      - FEC coding and modulation (MODCOD) differ in a frame to frame basis
  - **Modulation Schemes: QPSK, 8PSK, 16APSK and 32APSK**
  - **Enhanced FEC mechanisms**

Confidential and proprietary information

13

DVB-S2 is the second generation of DVB system for broadband satellite services.  
MODCOD combination of Modulation and FEC

---

---

---

---

---

---

---



# SkyEdge II Introduction

Outbound – MODCOD

## MODCOD

### Modulation Schemes

- QPSK ----- 2 bits per symbol
- 8PSK ----- 3 bits per symbol
- 16APSK ----- 4 bits per symbol
- 32APSK ----- 5 bits per symbol

### Coding (FEC)

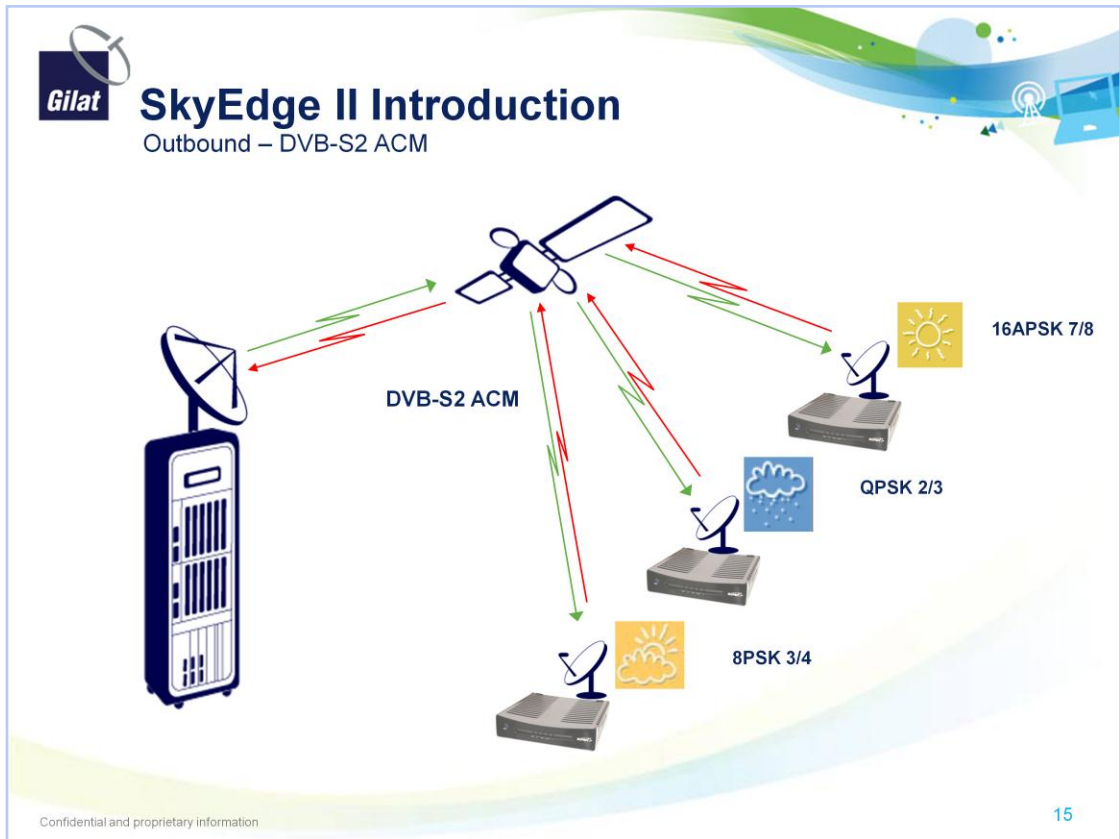
- LDPC / BCH Forward Error Correction Codes
- 1/4, 1/3, 2/5, 1/2, 3/5, 2/3, 3/4, 4/5, 5/6, 8/9 and 9/10

QPSK1/2

Robust

16APSK8/9

Efficient



In ACM mode different MODCODs (combination of Modulation and forward error correction coding) are used to transmit to each VSAT according to the measured Es/No. The total OB bit rate changes dynamically according to the MODCOD used.

In this example we have one Hub and three VSATs. Each VSAT has a very different weather condition. According to their Es/No measurements the Hub will transmit to each one using different MODCODs. If the weather condition worsens, a more robust MODCOD will be selected from the MODCODs configured in the system.

---

---

---

---

---

---

---

---



## SkyEdge II Introduction

Inbound – General Description

- The IB channel carries
  - User traffic, VSAT initial logon, maintenance information and capacity requests
- Based DVB-RCS standard (EN 301 790)
- Uses (Multi-Frequency Time-Division Multiple Access) MF-TDMA
  - Reservation based access scheme
  - Reservation Only! No collisions.
  - The IB burst allocation plan is broadcasted within the DVB-S2 OB channel
- Modulation schemes QPSK and 8PSK
- Multiple IB channels of different types
  - Each type of IB channel is named a Carrier type (CT)
  - A Carrier type is defined by one symbol rate and a one or more MODCODs

Confidential and proprietary information

16

Capacity Request is the request for allocation of to send traffic. The types of requests are based on the type of traffic that each VSAT has to transmit.

---

---

---

---

---

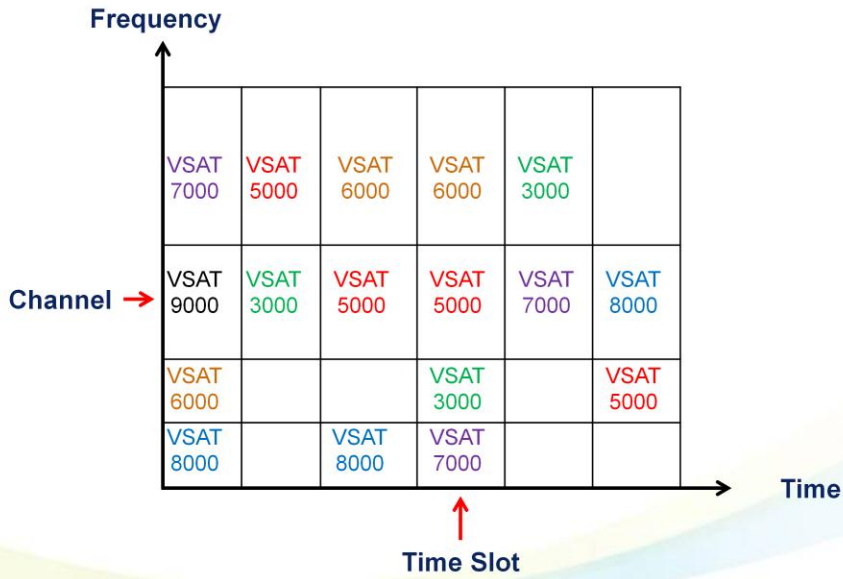
---

---



# SkyEdge II Introduction

Inbound – MFTDMA



Confidential and proprietary information

A VSAT transmits at a specific channel (frequency) at a specific time (Time Slot)

---

---

---

---

---

---

---



## System Capabilities

- Up to Four Network Segments (NS)
- 30000 VSATs per Hub
- Outbound capacity:
  - Up to 54 MHz, 45 Msps, 135 Mbps per NS
- Total Inbound capacity
  - Up to 12.288 MHz, 10.24 Msps, 26.333 Mbps per HSP in Star
  - Up to 18.432 MHz overall per HSP (Star and Mesh).

Confidential and proprietary information

18

Minimum CCM OB symbol rate is 300 ksps (short frames).

Minimum ACM OB symbol rate is 1.5 Msps (short frames)

---

---

---

---

---

---

---

---



## Application Enhancements

- Enhanced Data-Com & IP features for full flexibility: RIP2, RIPng, NAT, DHCP, IGMP, VRRP, etc.
- Embedded TCP acceleration
- VoIP
  - Support of all VoIP components
  - Support of SIP, H.323, RTP and RTP Compression.
- Telecom Backhaul – GSM, CDMA, DCME.
- IB QoS - DiffServ, MPN, VSAT priority, Flow Priority, VSAT Access List
- OB QoS
- SkyMon - Network Traffic Monitoring Server
- Optional external management interface – SNMP, SOAP
- Optional HTTP Acceleration (IPA)
- Multiple VLAN support
- Support all IP applications

Confidential and proprietary information

19

RIP – Routing Information Protocol

NAT – Network Address Translation

DHCP – Dynamic Host Configuration Protocol

IGMP - Internet Group Management Protocol

VRRP – Virtual Router Redundancy Protocol

CRTP - Compressed Real Time Transport Protocol.

SNMP - Simple Network Management Protocol

SOAP - Simple Object Access Protocol

---

---

---

---

---



## Test Your Knowledge

1. What topologies are supported in SEII? \_\_\_\_\_
2. What is a MODCOD? \_\_\_\_\_
3. What is the maximal number of Network Segments in the system? \_\_\_\_\_
4. What is a Carrier Type? \_\_\_\_\_
5. What is the IBSS function? \_\_\_\_\_
6. What is the AppSS function? \_\_\_\_\_
7. What is ACM? \_\_\_\_\_
8. Arrange the following MODCODs from robust to efficient: 8PSK5/6, QPSK2/3, 16APSK9/10, 32APSK3/4, QPSK9/10

Robust \_\_\_\_\_, \_\_\_\_\_, \_\_\_\_\_, \_\_\_\_\_, \_\_\_\_\_ Efficient

---

---

---

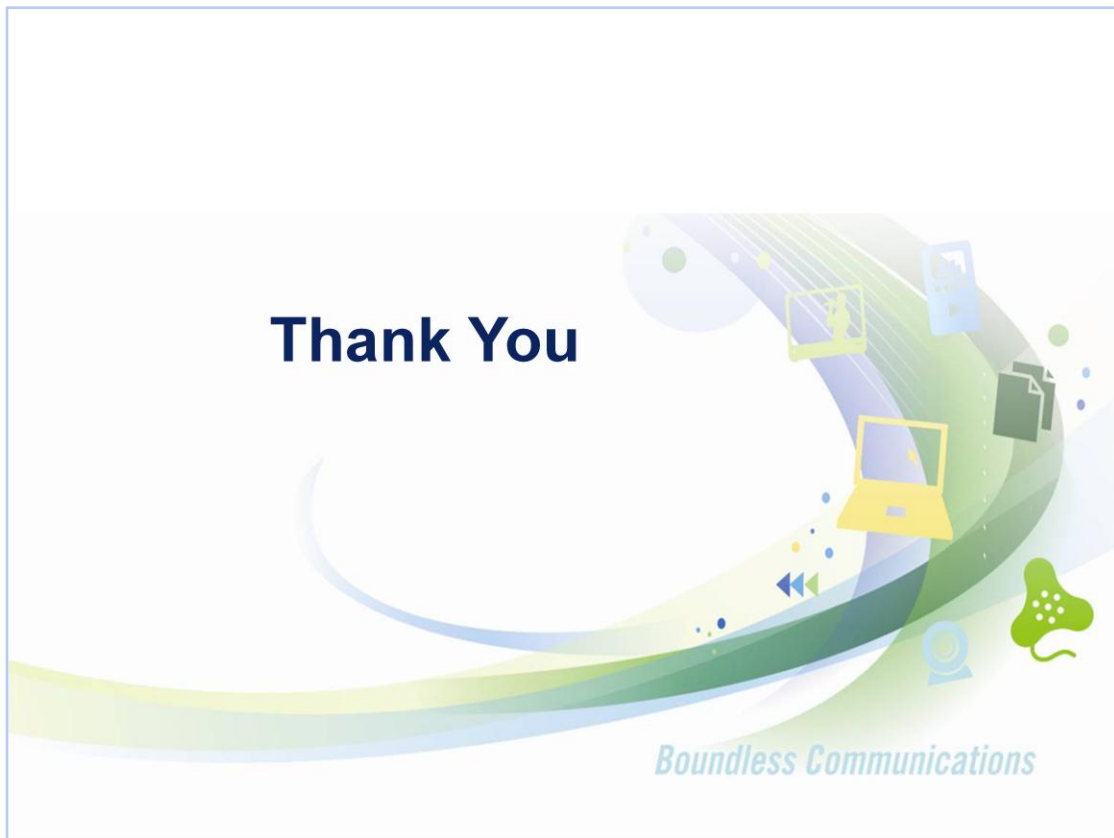
---

---

---

---

---



---

---

---

---

---

---

---