

This document contains information proprietary to Gilat Satellite Networks Ltd. and may not be reproduced in whole or in part without the express written consent of Gilat Satellite Networks Ltd. The disclosure by Gilat Satellite Networks Ltd. of information contained herein does not constitute any license or authorization to use or disclose the information, ideas or concepts presented. The contents of this document are subject to change without prior notice.



Agenda

- Adding a new VSAT to NMS through:
 - Adding new VSAT
 - Duplicating existing online VSAT
 - Using the add VSAT wizard
- Verifying parameters of a new VSAT in NMS configuration
- Test your knowledge



Confidential and proprietary information



VSAT NMS Configuration

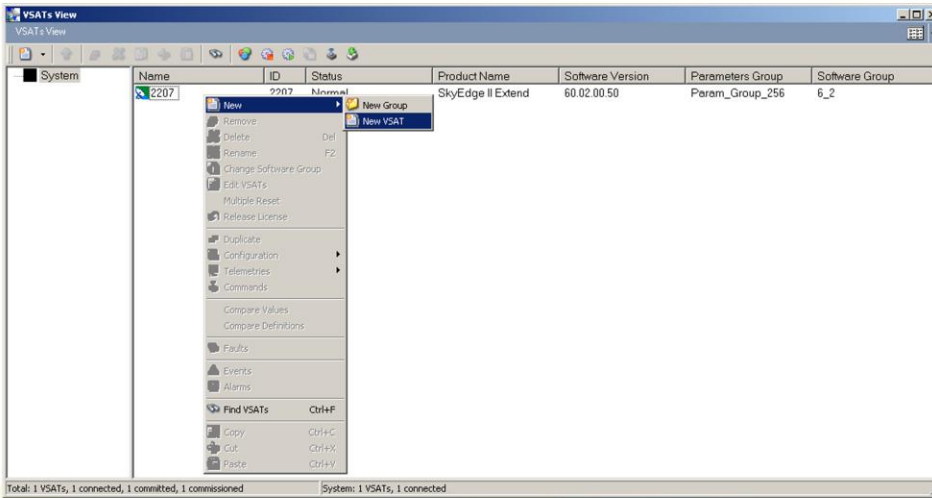
- There are three ways to add a new VSAT in the NMS
 - Add new VSAT – right click on the VSATs view window, and select new -> VSAT
 - Duplicate existing VSAT – right click on existing VSAT and select duplicate
 - Using the add VSAT wizard – through the wizards menu of the NMS browser



VSAT NMS Configuration

1. Add New VSAT

- In the  VSATs View window right click and select: **New → New VSAT**



Confidential and proprietary information

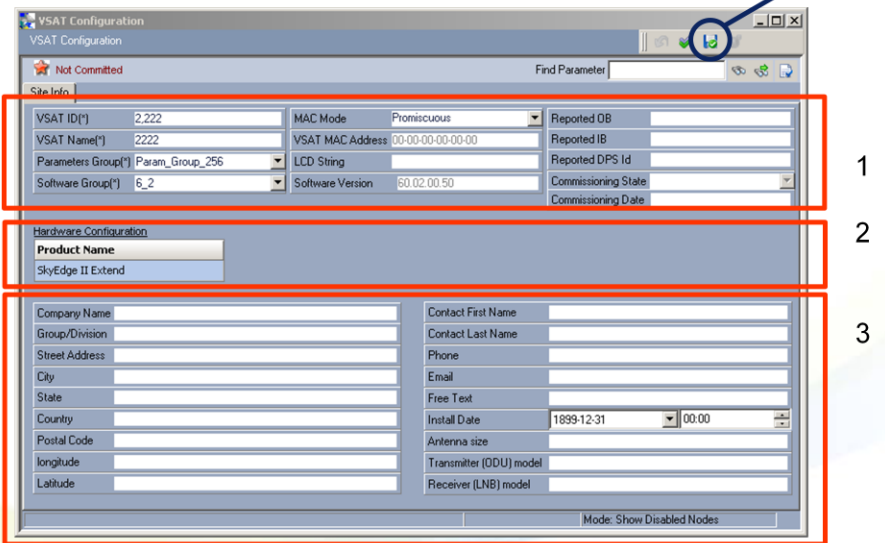


VSAT NMS Configuration

1. Add New VSAT

- First, the site info window opens

After entering parameters, press save



Confidential and proprietary information

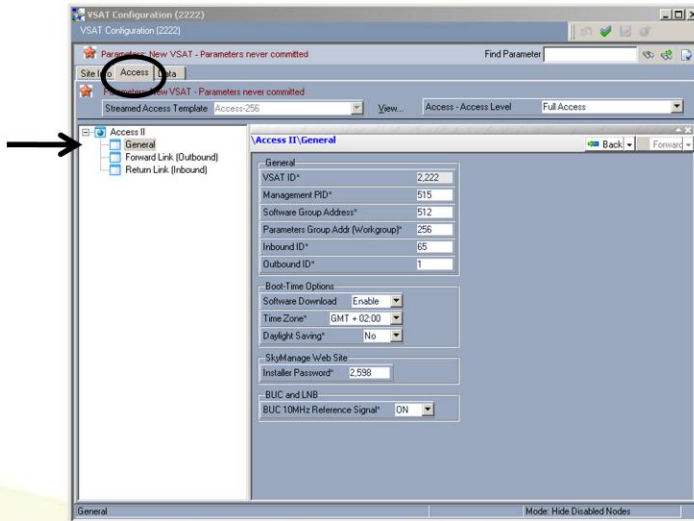
1. General VSAT ID configuration parameters – VSAT ID, Name, Parameter group, software group.
 MAC Mode – relates to the authentication mode of the VSAT:
 - a. **Get From VSAT** – first time the VSAT goes Online, the NMS will register its MAC address and check this VSAT against it from now on.
 - b. **Enter Manually** – the VSAT will be authenticated against the MAC address entered manually in the field below.
 - c. **Promiscuous** – the VSATs’ MAC will not be checked in authentication.
 LCD String – If the VSAT has an LCD string, this text will be displayed on it.
2. Hardware configuration – select the VSAT type and, if relevant, the expansion drawers.
3. VSATs’ general information – used to assist hub operator. Parameters entered here do not affect the configuration.



VSAT NMS Configuration

1. Add New VSAT

- After pressing save, the Access and Data tabs appear on top
- In Access tab:



Confidential and proprietary information

6

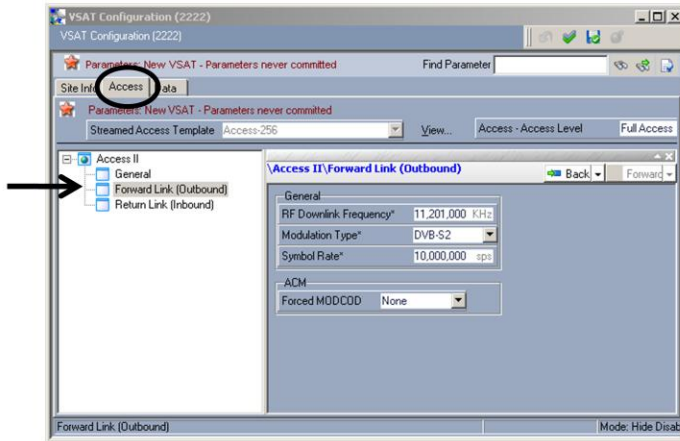
In the Access tab, under General see the parameters are correct and verify the BUC 10MHz Reference signal value (highly – on, lowly – off)



VSAT NMS Configuration

1. Add New VSAT

- Under Access -> Forward Link – verify the Outbound parameters are correct



Confidential and proprietary information

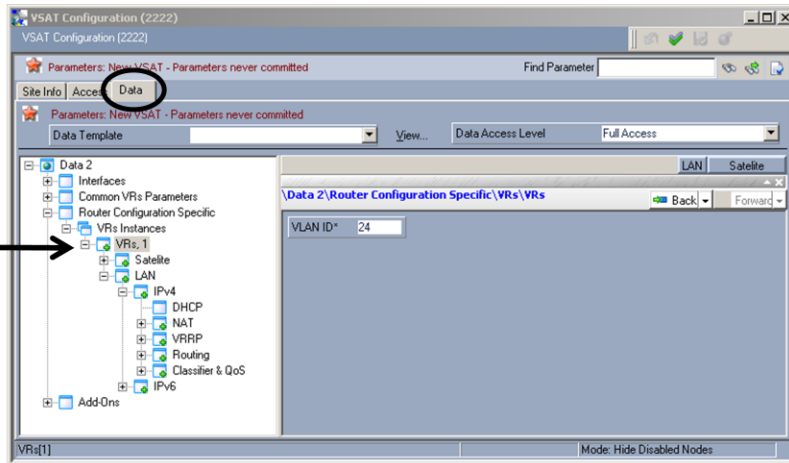
Forced MODCOD should be None by default.



VSAT NMS Configuration

1. Add New VSAT

- Under Data tab → Router Configuration Specific → VRs Instances → VRs, 1 – verify that VLAN ID is 24



Confidential and proprietary information



VSAT NMS Configuration

1. Add New VSAT – VSAT VLANs

- In SE II we can have multiple VLANs and IP addresses behind one VSAT
- In this presentation we will add a VSAT with only one IP address and one VLAN
- When adding a VSAT to the NMS, the default VLAN of the VSAT is VLAN 24
- Adding a VSAT with multiple VLANs will be taught in the future...

Confidential and proprietary information

Unless defined differently, by default, a VSAT will have only VLAN 24.

A VLAN is a virtual subset (broadcast domain) of a switched network. It's useful in situations where it is desirable to create separate logical LAN networks without significantly changing an existing physical network.

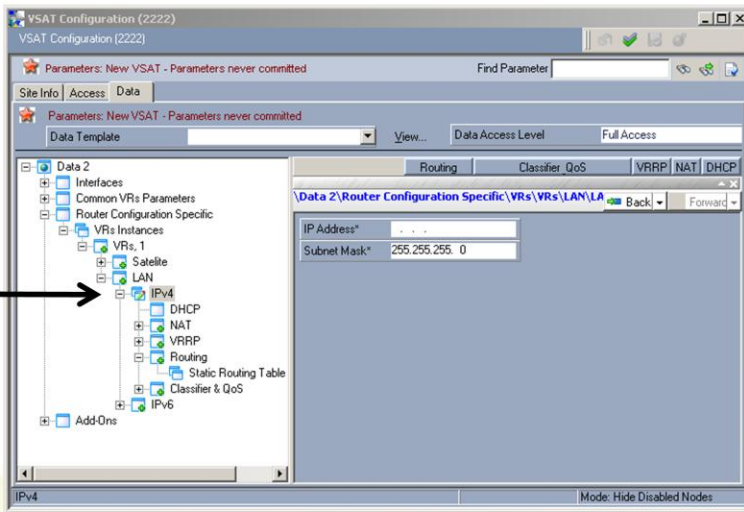
VLANs enable separating traffic at Layer 2 of the OSI model and can be used to create broadcast domains that are restricted to a specific client or group of users, enhancing both security and performance.



VSAT NMS Configuration

1. Add New VSAT

- Under Data → Router Configuration Specific → VRs Instances → VRs, 1 → LAN → IPv4 – enter the IP address and subnet mask of the VSAT



Confidential and proprietary information

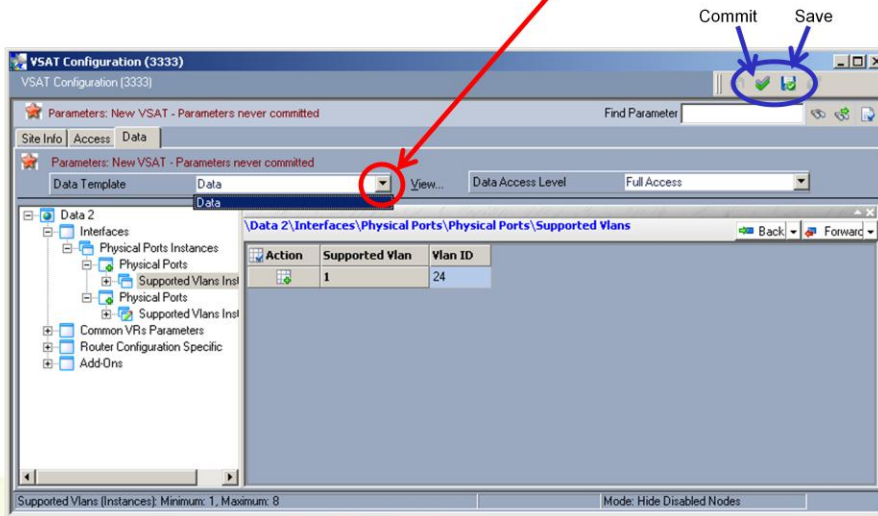
(if using multiple VRs, choose IP address for this specific VR)



VSAT NMS Configuration

1. Add New VSAT

- Choose a data template from the drop down menu
- Save, commit and reset the VSAT



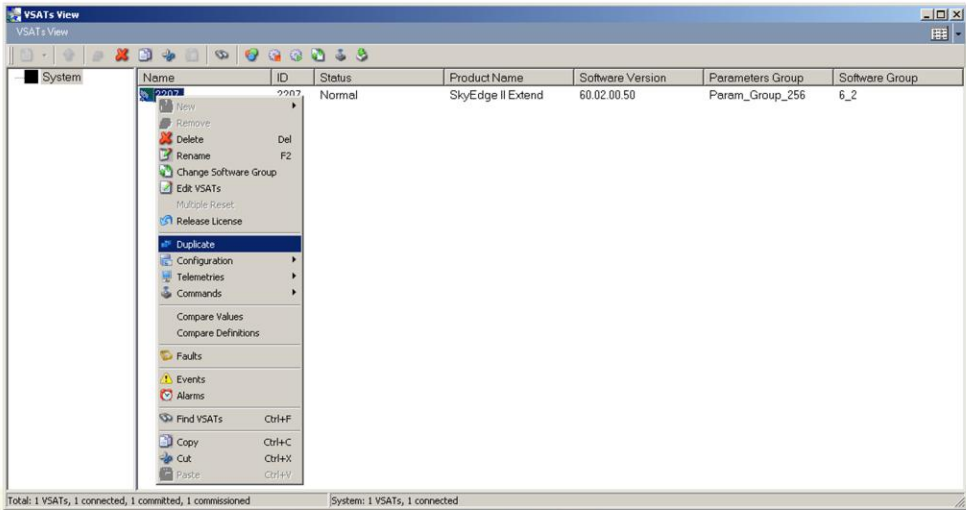
After pressing Commit, you will be asked if you want to reset the VSAT with the commit.



VSAT NMS Configuration

2. Duplicate VSAT

- In the  VSATs View window right click on a VSAT and select Duplicate



Confidential and proprietary information



VSAT NMS Configuration

2. Duplicate VSAT

- A new VSAT is created with duplicated parameters
- VSAT specific parameters should still be entered. VSAT ID, VSAT name, IP address, phone number (if relevant), VLAN configuration (if relevant)
- Although Access parameters should be the same, verify them as shown in previous slides
- This is usually the fastest way to create a VSAT. When duplicating an existing Online VSAT, the new one should come Online
- Make sure you change the VSAT specific parameters!!!

Confidential and proprietary information

13

Check the Access and Data parameters as explained before in: 1. Add new VSAT



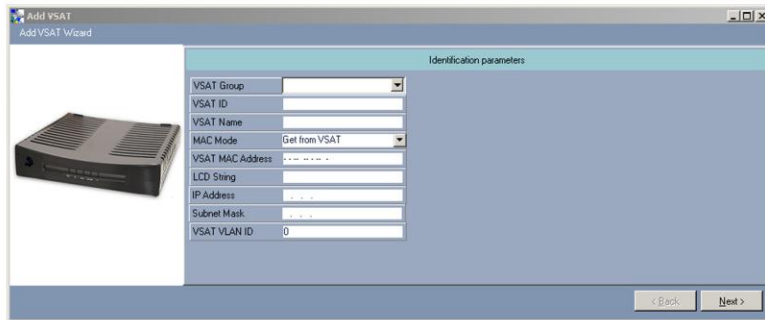
VSAT NMS Configuration

3. Add VSAT Wizard

- The add VSAT wizard can be accessed from the  icon, or from the NMS top menu at



- After selecting, the following window appears. Enter the requested parameters and press next



Confidential and proprietary information

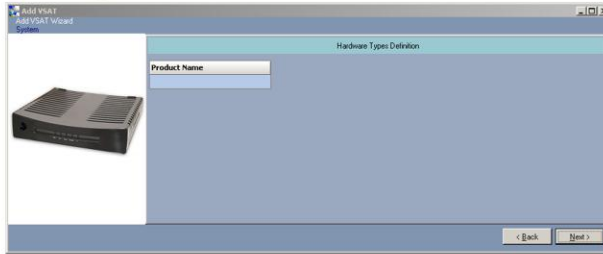
The VSAT wizard prompts you for some of the basic parameters needed to create a VSAT.



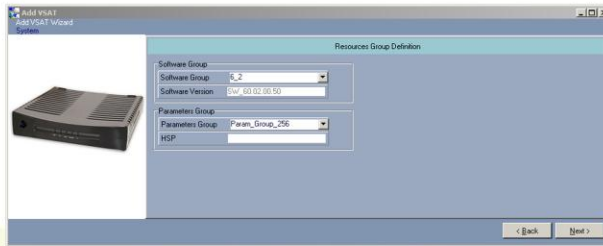
VSAT NMS Configuration

3. Add VSAT Wizard

- Choose product



- Select Software Group and Parameter Group



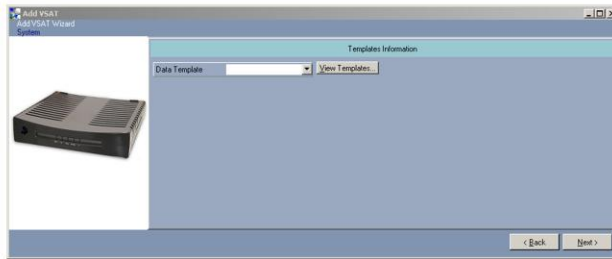
Confidential and proprietary information



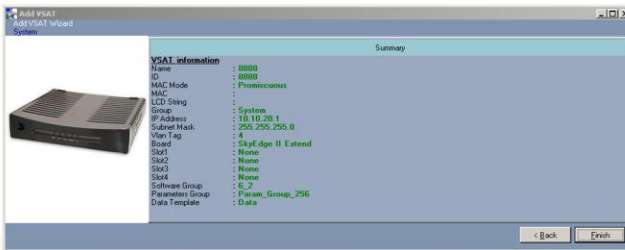
VSAT NMS Configuration

3. Add VSAT Wizard

- Choose Data Template



- A final verification screen



Confidential and proprietary information



VSAT NMS Configuration

3. Add VSAT Wizard

- The new VSAT is created and appears in the VSAT view window
- Validate the Access (OB) parameters of the newly created VSAT



Confidential and proprietary information

17

Check the Access parameters as explained before



VSAT NMS Configuration

- After the VSAT has been created successfully and configured correctly on the VSAT side, it should come online and become green in the VSAT view window

Name	ID	Status	Product Name	Software Version	Parameters Group	Software Group
2207	2207	Normal	SkyEdge II Extend	60.02.00.50	Param_Group_256	6_2

Total: 1 VSATs, 1 connected, 1 committed, 1 commissioned System: 1 VSATs, 1 connected



VSAT NMS Configuration

Test your Knowledge

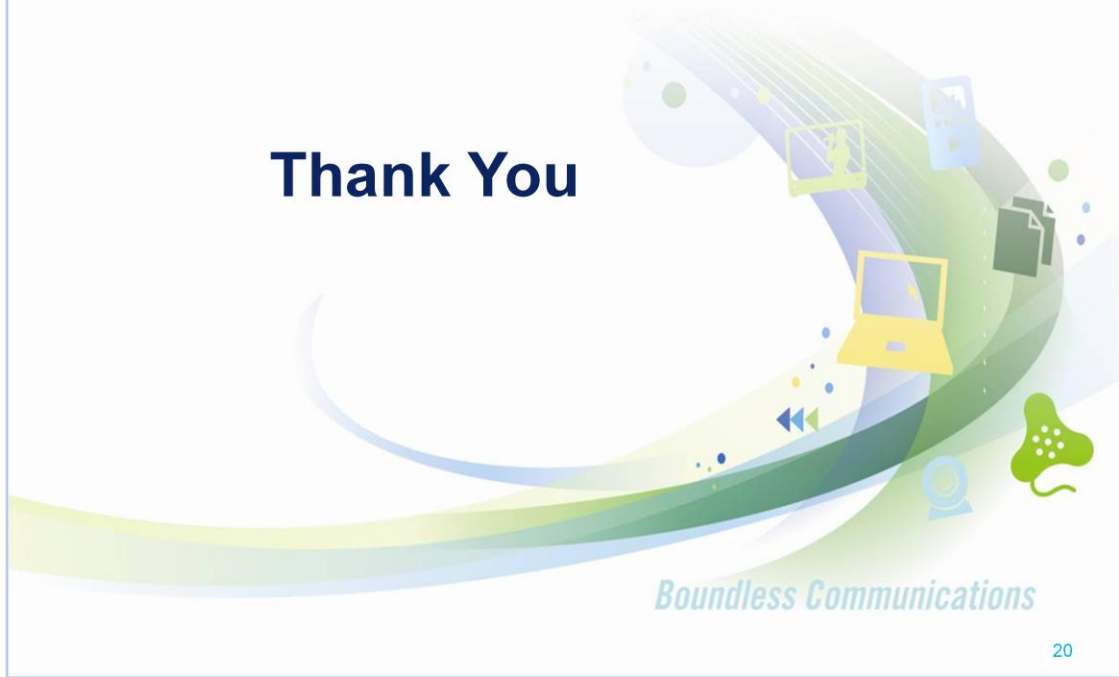
1. What are the three ways to create a new VSAT in the NMS?

2. When using duplicate VSAT, what parameters will still have to be changed? _____
3. What is the default VLAN for a VSAT _____
4. When using the add VSAT wizard, what parameters must be verified?

5. If you've created a new VSAT, but forgot to enter its IP address (next time pay attention in class), what will happen?



Thank You



Boundless Communications
